



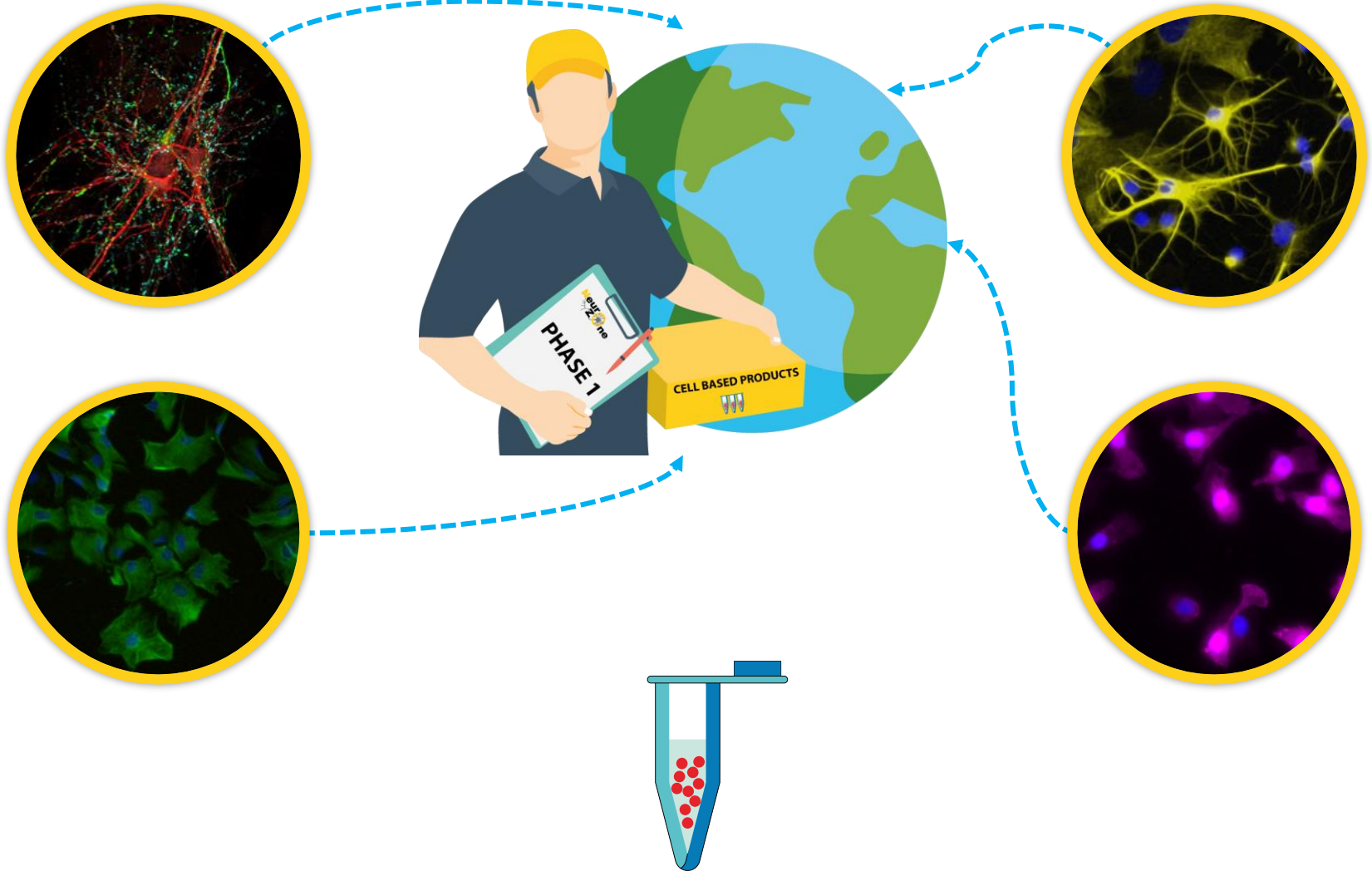
sanipedia

# Lab Activities Evolution

Noemi Tonna

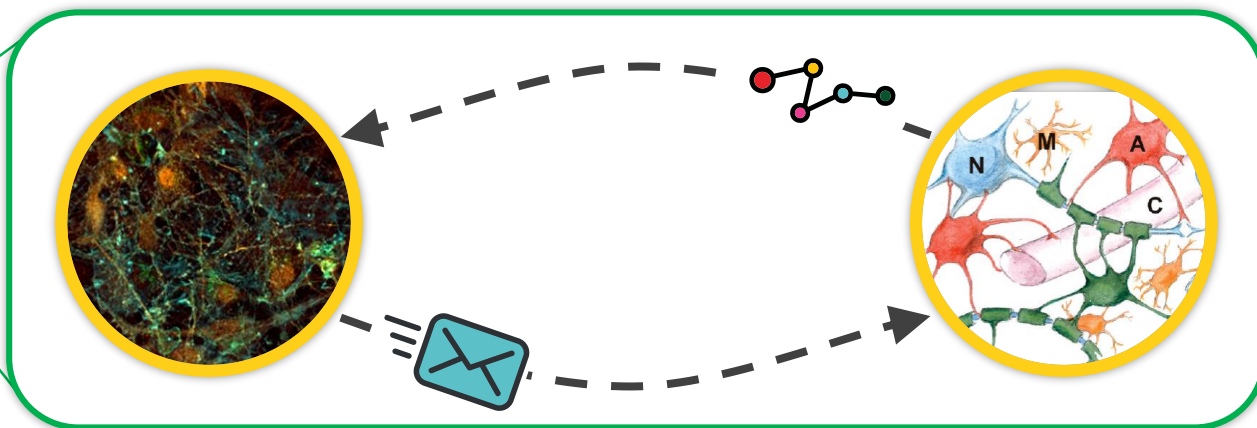


delivery of  
**CELL BASED PRODUCTS**





study of  
**CELL-CELL  
COMMUNICATION**

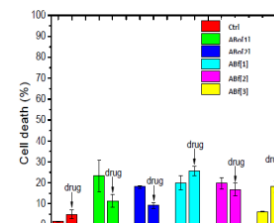


UNRAVELING **COMPLEXITY**



Understand how  
the biological response of target cell  
is modulated by the surrounding  
environment in different  
pathophysiological scenarios

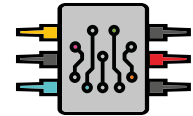
PROFILING **COMPOUNDS**



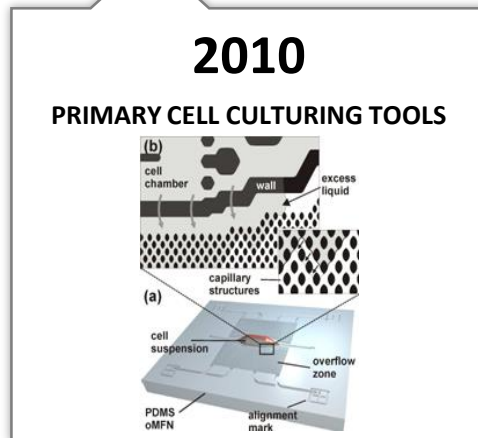
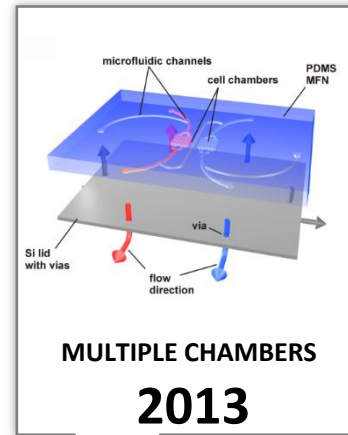
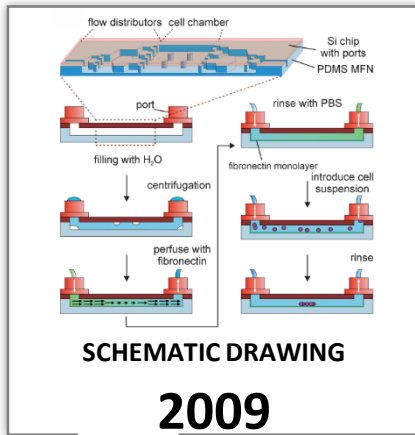
Profile candidate compounds  
according to the biological  
mechanisms activated in target cells  
with respect of different  
pathophysiological scenarios



development of  
**INNOVATIVE MICROFLUIDICS  
SOLUTIONS**



**PHASE 3**





## WORLDWIDE RESEARCH COLLABORATIONS



EU Grant FP7  
**CARDIOVASCULAR SHOCK**



Joint Development Agreement:  
**MICROFLUIDICS FOR CELL ASSAYS**



